

**For more information contact ...**

Downtown Bloomsburg, Inc.  
 238 Market Street  
 Bloomsburg, PA 17815  
 570-784-2522  
[BloomsburgDowntown.com](http://BloomsburgDowntown.com)

Columbia Montour Chamber of Commerce  
 238 Market Street  
 Bloomsburg, PA 17815  
 570-784-2522  
[ColumbiaMontourChamber.com](http://ColumbiaMontourChamber.com)

Columbia-Montour Visitors Bureau  
 121 Papermill Road  
 Bloomsburg, PA 17815  
 570-784-8279  
[ITourColumbiaMontour.com](http://ITourColumbiaMontour.com)

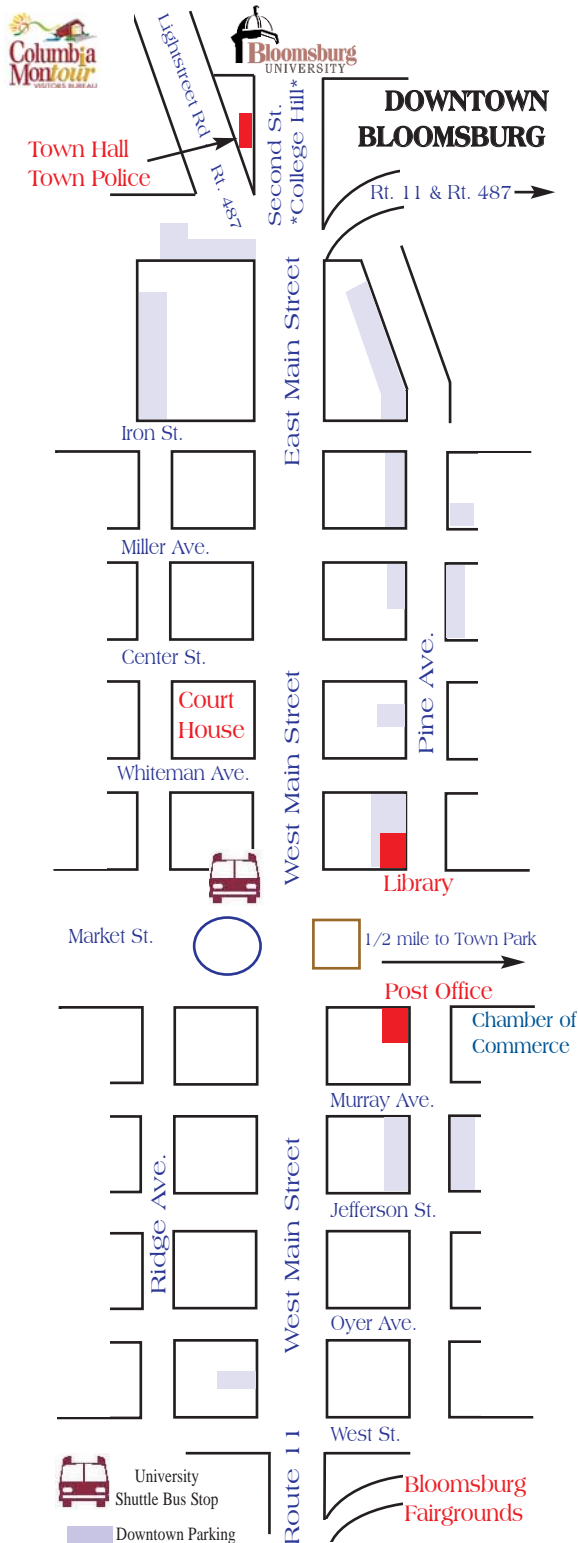
Bloomsburg Town Hall  
 301 East Second Street  
 Bloomsburg, PA 17815  
 570-784-7703  
[BloomsburgPA.org](http://BloomsburgPA.org)

Columbia County Court House  
 35 West Main Street  
 P.O. Box 380  
 Bloomsburg, PA 17815  
 570-389-5600

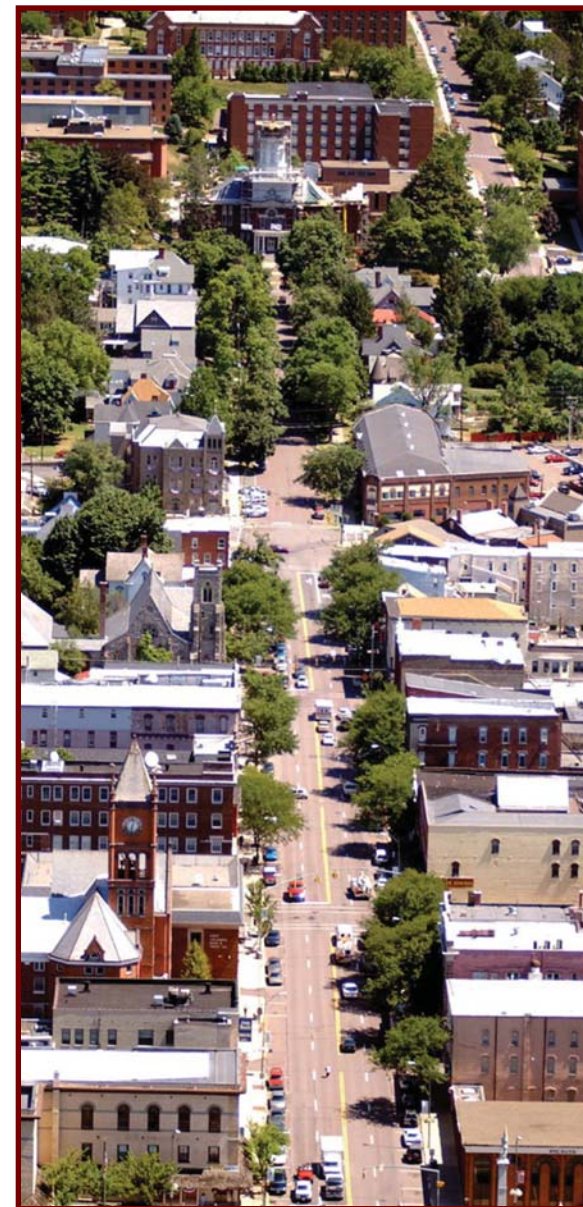
Bloomsburg University of Pennsylvania  
 400 East Second Street  
 Bloomsburg, PA 17815-1301  
 570-389-4000  
[bloomu.edu](http://bloomu.edu)

Bloomsburg Police Department  
 301 East Second Street  
 Bloomsburg, PA 17815  
 570-784-4155

*Special thanks to:*



*Be at  
 Downtown  
 Bloomsburg*



Main Street, Bloomsburg

## Historic College Town

Bloomsburg, a classic college town on the Susquehanna River, is the home of Bloomsburg University, one of fourteen schools in the Pennsylvania state system. In a ten-block stretch along historic, tree-lined Main Street, Downtown Bloomsburg has a variety of restaurants, boutique retail stores, art galleries, professional offices, a radio station, and a professional theater company. Residents, students, and visitors love exploring all that Downtown Bloomsburg has to offer.

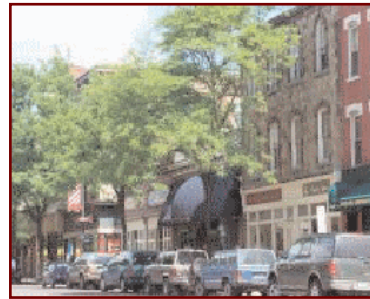


## County Seat

The Columbia County Court House serves 65,000 residents of the county. Other public buildings include the Bloomsburg Town Hall/Police Department, Bloomsburg Public Library, Bloomsburg Regional Technology Center, and United States Post Office, all of which bring Columbia County residents and visitors to the Downtown.

## Active Business Community

Downtown merchants and professionals are supported by local business and community organizations, including the staff at the Columbia Montour Chamber of Commerce, Columbia-Montour Visitors Bureau, and Downtown Bloomsburg, Inc.

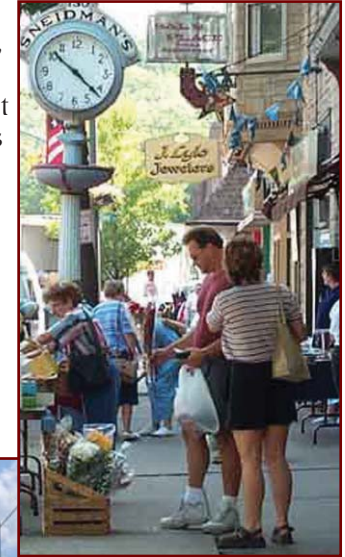


## Accessible Retail Hub

Bloomsburg is a rapidly growing retail hub. Approximately 27,000 people live within 5 miles of Downtown. Highly accessible, Main Street is State Route 11, which has an average of 15,000 vehicles per day. Interstate 80 is two miles from Downtown, with exits on the east and west ends of town.

## Annual Events

One of the most popular annual events is the Renaissance Jamboree, a street fair with an estimated 6,000 attendees. Residents and visitors also enjoy Sidewalk Sales, Custom Cruise-In Power Tour, Market Street Mile, Fall Window Painting Exhibition, Oktoberfest, North Pole Express, Taming of the Brew, Shop 'til Midnight, TreeFest, and a host of seasonal parades on Main Street. Downtown Bloomsburg's picturesque Main Street is the perfect setting for events in every season.



## Bloomsburg Fairgrounds

Every year, nearly half a million people visit the Bloomsburg Fair, the largest fair in Pennsylvania! An annual event since 1855, the fair is usually held the last week in September. There are rides, games, live entertainment, all kinds of food, and industrial, agricultural and educational exhibits. Many merchants showcase their goods and services at fair booths, cultivating loyal patrons who return to Bloomsburg year after year. The fairgrounds are also the site of many year-round events such as the Early Bird Sports Expo and Bloomsburg Antique Show.

## College Town Business Benefits

Bloomsburg University has nearly 8,000 students and 1,000 faculty and staff. It is the largest employer in Columbia County. The

University sits at the top of Main Street, one block from Downtown. Its location means substantial foot traffic on pedestrian-friendly Main Street and a great opportunity to market your business to students, faculty, staff, and their families. Many businesses have relationships with Bloomsburg University, creating incentives for students and employees to shop Downtown.

